

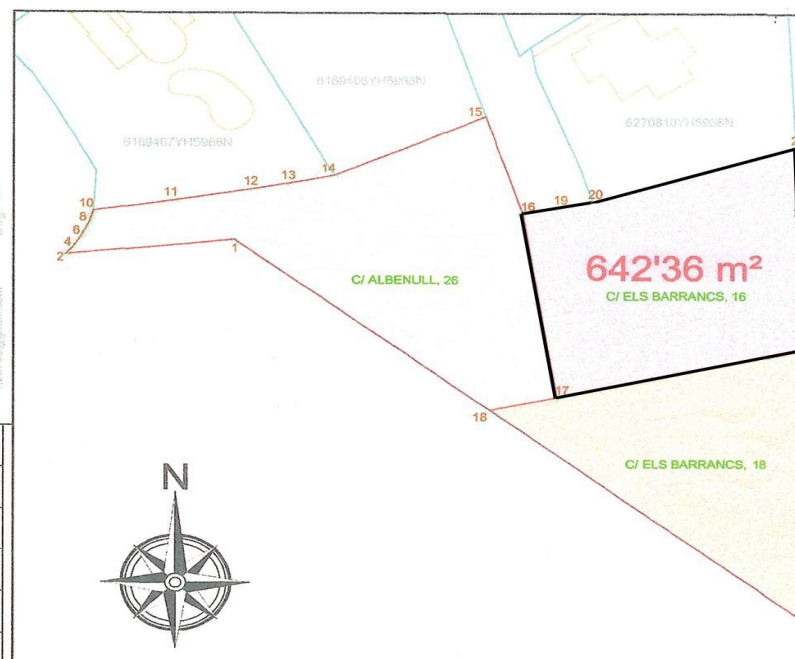
CPE4173V

Coordenadas UTM - ETRS89

| Nº | Coord. "X" | Coord. "Y" |
|----|------------|-------------|
| 18 | 756159.081 | 4296682.339 |
| 17 | 756166.110 | 4296683.896 |
| 24 | 756192.541 | 4296689.754 |
| 25 | 756192.712 | 4296686.024 |
| 26 | 756192.822 | 4296683.764 |
| 27 | 756193.372 | 4296678.124 |
| 28 | 756193.932 | 4296671.714 |
| 29 | 756194.082 | 4296669.994 |
| 30 | 756194.442 | 4296666.344 |
| 31 | 756197.372 | 4296652.954 |

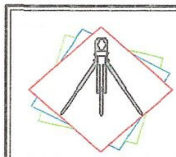
| Nº | Coord. "X" | Coord. "Y" |
|----|------------|-------------|
| 1 | 756132.320 | 4296702.884 |
| 2 | 756114.640 | 4296701.035 |
| 3 | 756114.790 | 4296701.195 |
| 4 | 756115.320 | 4296701.835 |
| 5 | 756115.800 | 4296702.515 |
| 6 | 756116.240 | 4296703.205 |
| 7 | 756116.630 | 4296703.935 |
| 8 | 756116.980 | 4296704.695 |
| 9 | 756117.280 | 4296705.475 |
| 10 | 756117.520 | 4296706.265 |
| 11 | 756126.134 | 4296707.633 |
| 12 | 756134.300 | 4296708.930 |
| 13 | 756138.132 | 4296709.669 |
| 14 | 756142.750 | 4296710.580 |
| 15 | 756158.600 | 4296717.770 |
| 16 | 756162.531 | 4296706.034 |
| 17 | 756166.110 | 4296683.896 |
| 18 | 756159.081 | 4296682.339 |

| Nº | Coord. "X" | Coord. "Y" |
|----|------------|-------------|
| 17 | 756166.110 | 4296683.896 |
| 16 | 756162.531 | 4296706.034 |
| 19 | 756166.181 | 4296706.734 |
| 20 | 756169.901 | 4296707.444 |
| 21 | 756191.121 | 4296714.054 |
| 22 | 756191.431 | 4296705.364 |
| 23 | 756191.921 | 4296694.954 |
| 24 | 756192.541 | 4296689.754 |



LEYENDA

| | |
|---------------------------------|---------------|
| Perímetro Parcela (Lev.Top.) | — |
| Punto Perimetral // Número | 00 |
| Referencia Catastral | 62706-VH0966N |
| Parcela Catastral (SDGC) | — |
| Multiparcel·la Catastral (SDGC) | — |



Propietario: **ORBETA, S.A.**

Parcela: según descripción en el Plano
Referencia Catastral: ver Referencia en el Plano

T. Municipal de:
ORBA

PLANO: Geo-Referenciado
Levantamiento topográfico
U.T.M.-ETRS89- Huso 30

Urbanización:
L'Aspre (Orbeta)

Escala: **1/500**

Impresión: **23/01/24**

Referencia técnica:
DSGC_JMFP/24
Control: **EXP. 4/2T**

Superficie:
Según Plano

Firmado por:
ROSENDO ORTIGAS BALLESTER
C.O.I.T. Nº 1.111.111.111
Rosendo José Ortigas Ballester
C.O.I.T. Nº 1.111.111.111 "Alcant"

Land in Orba

€60,000



Urbanización Orbeta



Urbanización Orbeta



Urbanización Orbeta



0



0



N/A



642m²



N/A

Plot situated in Orba, specifically in Orbeta urbanization. Total area of the plot 642,36 sq meters. It is possible to build a villa on two floors. The plot has views and is very close to Orba village. It is located in a complex with lots of character.

Urbanización Orbeta

